

BUILDING OUR FUTURE TOGETHER

Construction Update And Future Facilities Needs

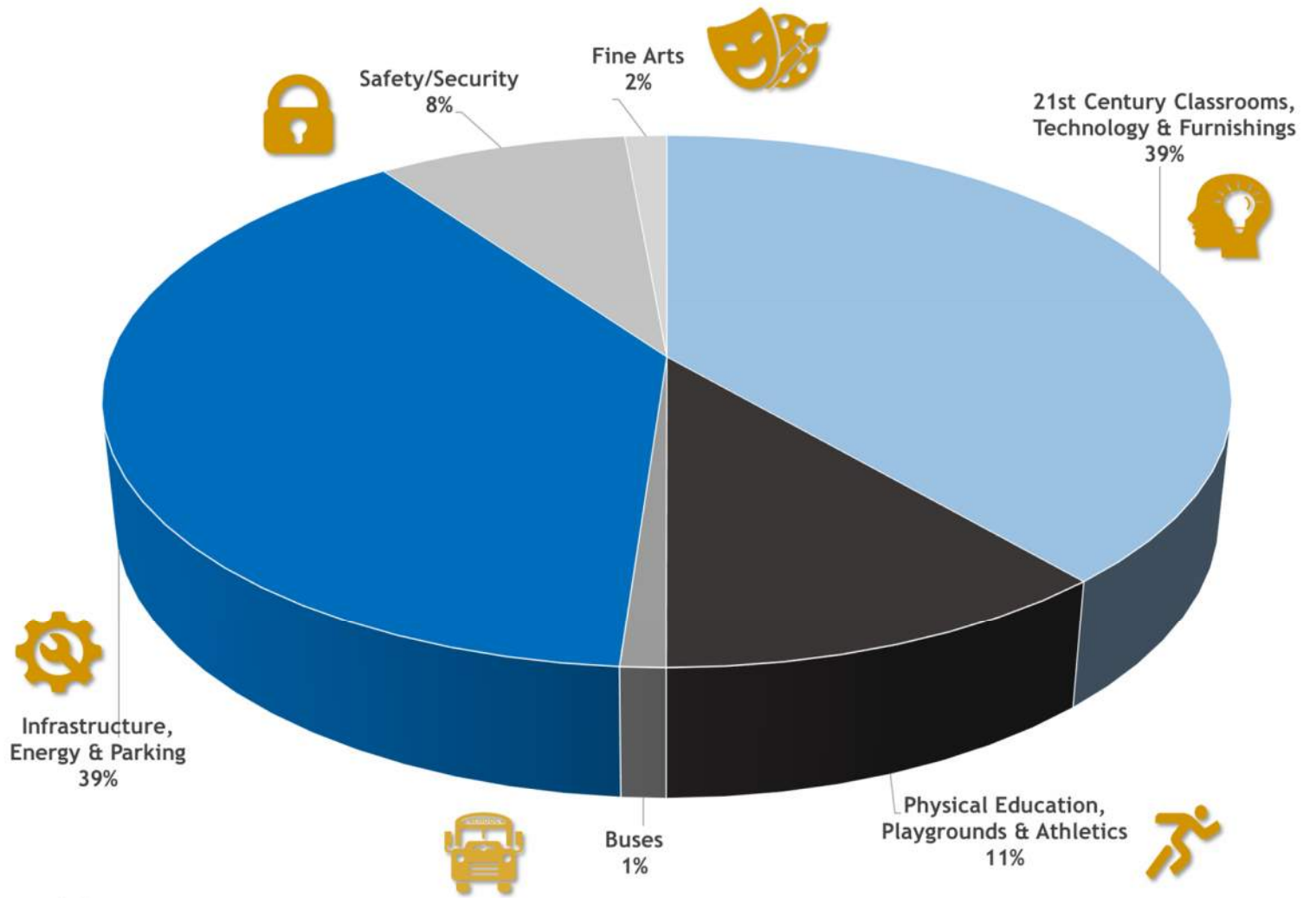


- 2021 Bond Update
- Opportunities for the Future
- Open Discussion



On Tap Tonight

Investment Areas



As of 3/24/21

Central Campus - At-A-Glance

DK-12 One Campus, Pre-K/ECC & Admin Offices at Kenwood



RESIDENTIAL DEVELOPMENT
(PREVIOUSLY SCHALM)



RESIDENTIAL DEVELOPMENT
(PREVIOUSLY BAKER)



CENTRAL CAMPUS HIGH SCHOOL
9-12 1ST & 2ND FLOOR

NEW MIDDLE SCHOOL WING ADDITION
6-8 1ST & 2ND FLOOR
OLD MIDDLE SCHOOL BECOMES NEW ELEMENATRY
DK-1 1ST FLOOR
2-5 2ND FLOOR



KENWOOD ELEMENTARY
PRE-K/ECC AT KENWOOD WITH ADMIN OFFICES



Preparing
learners to succeed
today and every
day is at the heart
of what we do.
WE ARE
Clawson Public Schools.

CONSTRUCTION UPDATE

- Current Activities and Tasks:
 - Concrete Foundations
 - Storm Detention System
 - Underground Utilities, Plumbing and Electrical
- Upcoming Activities and Tasks:
 - First Course of Masonry
 - Fine Grade for Concrete Floor Slab
 - Concrete Floor Slab



Elevator Pit Foundations



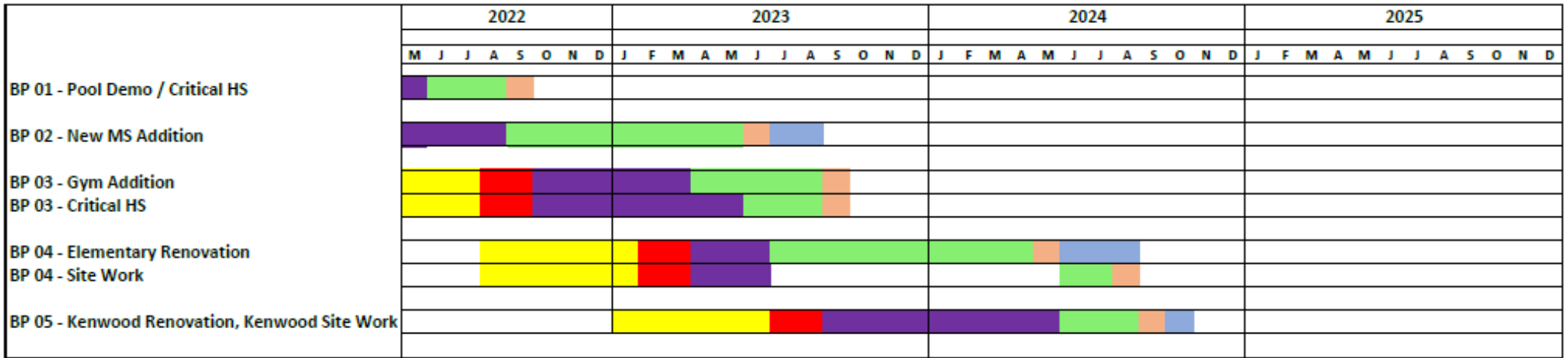
Time Lapse Camera



Exterior Foundation Install



Water Main Install



CONSTRUCTION TIMELINE

HIGH LEVEL SCHEDULE

Key:

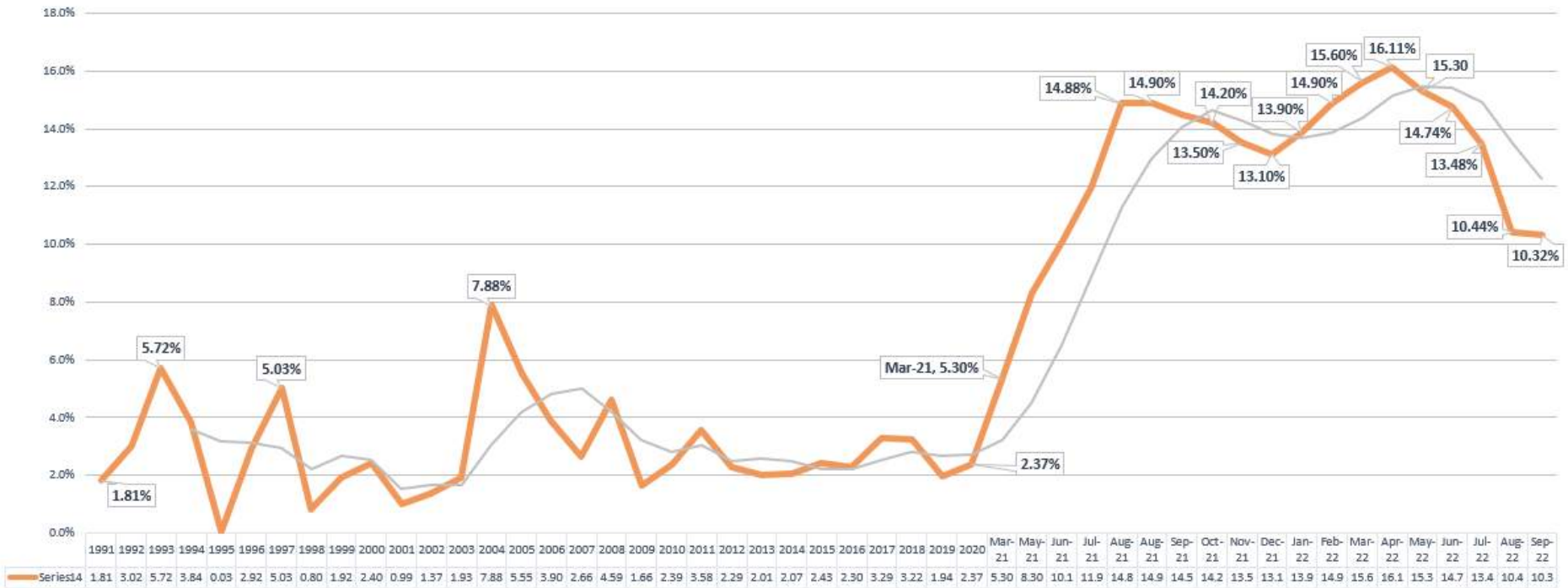
- Pre Bond
- Design
- Bidding
- Procurement
- Construction
- Punchlist, Final Clean
- Furniture, Equipment, Move-In

BIDDING/BUDGET UPDATE - BUILDING COST INDEX

HOW ENR BUILDS THE INDEX: 68.38 hours of skilled labor at the 20-city average of bricklayers, carpenters and structural ironworkers rates, plus 25 cwt of standard structural steel shapes at the mill price prior to 1996 and the fabricated 20-city price from 1996, plus 1.128 tons of portland cement at the 20-city price, plus 1,088 board ft of 2 x 4 lumber at the 20-city price.

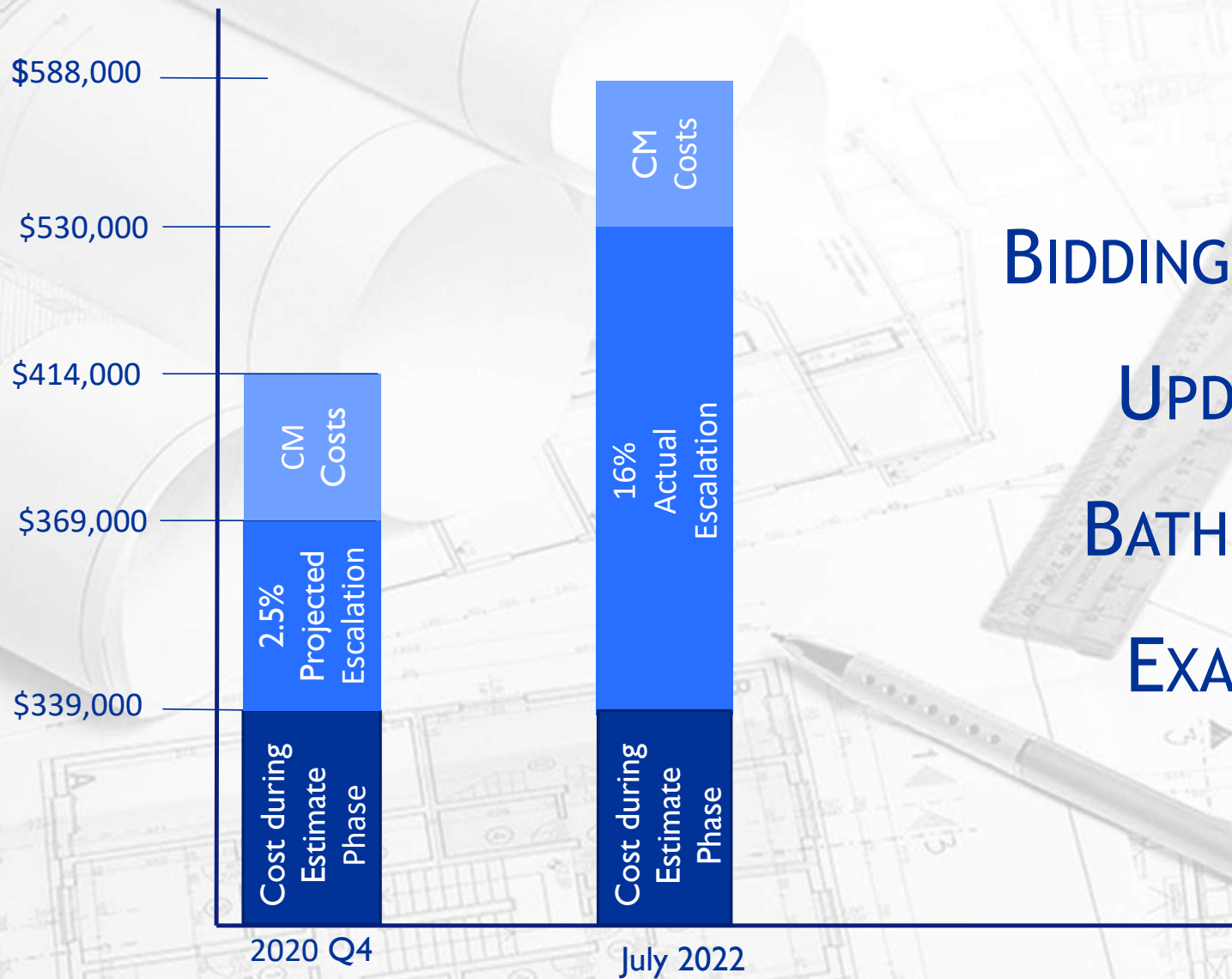


National Building Cost Index (BCI) - % Change Annually



Source: ENR

— - 4 term moving average



**BIDDING / BUDGET
UPDATE -
BATHROOMS
EXAMPLE**

CURRENT 2021 BOND BUDGET

	Bond Amount	Current Budget	VARIANCE	Costs to Date 10.11.22	Balance	Estimate Date
Quantifiable Trade Cost						
Bid Pack #1 - Trojan Hall Pool Demo	\$ 1,194,861	\$ 1,252,806	\$ 57,945	\$ 1,138,749	\$ 114,057	1/10/22 Post Bid
Bid Pack #2 - New MS	\$ 9,110,251	\$ 9,076,725	\$ (33,526)	\$ 1,013,589	\$ 8,063,136	4/12/22 Post Bid
Bid Pack #3 - HS Work	\$ 12,395,257	\$ 9,410,217	\$ (2,985,040)	\$	\$ 9,410,217	9/27/22 Post Bid with future rebid of WC 11A, 20, 23
Bid Pack #4 - MS to Elementary Conversion	\$ 11,127,619	\$ 14,084,664	\$ 2,957,045	\$	\$ 14,084,664	SD Estimate 10/3/22
Bid Pack #5 - Kenwood	\$ 5,880,125	\$ 5,820,553	\$ (59,572)	\$	\$ 5,820,553	Bond App w/ Escalation (May 2022) and Accepted VA (6/15/22)
Bid Pack #6 - Deferred Scope	\$ -	\$ 7,690,277	\$ 7,690,277	\$	\$ 7,690,277	Cost reflects deferred bond scope from all packages (10/13/22). Assumes carried out Summer 2025
Construction Costs/Design and Bid Contingencies Sub	\$ 39,708,114	\$ 47,335,242	\$ 7,627,128			
Construction Contingency:	\$ 1,073,192	\$ 1,173,192	\$ 100,000	\$ 262,412	\$ 910,780	
Construction Trade Costs Total:	\$ 40,781,306	\$ 48,508,434	\$ 7,727,128			
Christmas Staff/GCs:	\$ 1,576,820	\$ 1,696,473	\$ 119,653	\$ 473,784	\$ 1,222,689	
Christmas Fee:	\$ 917,579	\$ 917,579	\$ -	\$ 217,835	\$ 699,744	
Wakely Fee:	\$ 2,283,753	\$ 2,283,753	\$ -	\$ 462,763	\$ 1,820,990	
Design Reimbursables:	\$ 176,600	\$ 176,600	\$ -	\$ 85,224	\$ 91,376	
Design/CM Fees Total:	\$ 4,954,752	\$ 5,074,405	\$ 119,653			
Commissioning:	\$ 158,484	\$ 158,484	\$ -	\$ -	\$ 158,484	
Abatement:	\$ -	\$ -	\$ -	\$ -	\$ -	Currently covered by leftover bond funds from past project
Builder's Risk:	\$ 236,532	\$ 30,000	\$ (206,532)	\$ -	\$ 30,000	
Appliances/Kitchen Equipment Allowance:	\$ 168,926	\$ 168,926	\$ -	\$ -	\$ 168,926	
Moving Costs:	\$ 75,000	\$ 75,000	\$ -	\$ -	\$ 75,000	
Additional Classroom Furniture Allowance:	\$ 500,000	\$ 1,980,000	\$ 1,480,000	\$ -	\$ 1,980,000	
Total Owner Managed Costs:	\$ 1,138,942	\$ 2,412,410	\$ 1,273,468			
Technology:	\$ 5,600,000	\$ 5,600,000	\$ -	\$ 753,920	\$ 4,846,080	
Buses:	\$ 600,000	\$ 404,820	\$ (195,180)	\$ 404,820	\$ -	
Instruments:	\$ 200,000	\$ 141,593	\$ (58,407)	\$ 141,593	\$ 0	
Other School Equipment TBD:	\$ 800,000	\$ 300,000	\$ (500,000)	\$ 113,686	\$ 186,314	
Bond Proceeds:	\$ -	\$ 805,000	\$ (805,000)	\$	\$ 805,000	
Bond Interest	\$ -	\$ 900,000	\$ (900,000)	\$	\$ 900,000	
Misc Owner Costs	\$ -	\$ 75,000	\$ (75,000)	\$ 23,534	\$ 51,466	
Other Bond Costs Total:	\$ 7,200,000	\$ 8,226,413	\$ (2,533,587)			
Total Project Costs	\$ 54,075,000	\$ 64,221,663	\$ 6,586,663			12%

- **Option A**– Finish 2021 Bond Program with Strategically Reduced Scope
- **Option B** – Introduce Additional Funding



Opportunities for the Future



Community Feedback/Open Discussion

For More Information

www.clawsonschools.org/district/bond-proposal

Billy Shellenbarger, Superintendent

Email: Billy.Shellenbarger@clawsonschools.org | Phone: 248-655-4448

Kevin Taratuta, Director of Finance and Business Services

Email: Kevin.Taratuta@clawsonschools.org | Phone: 248-655-4409

Toby Nemyer, Director of Facilities

Email: Toby.Nemyer@clawsonschools.org | Phone: 248-655-4418

Contact Information